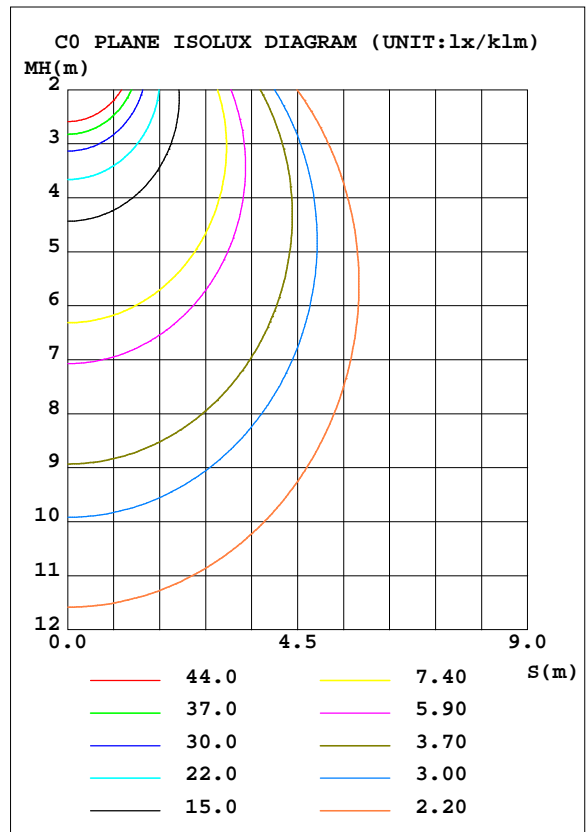
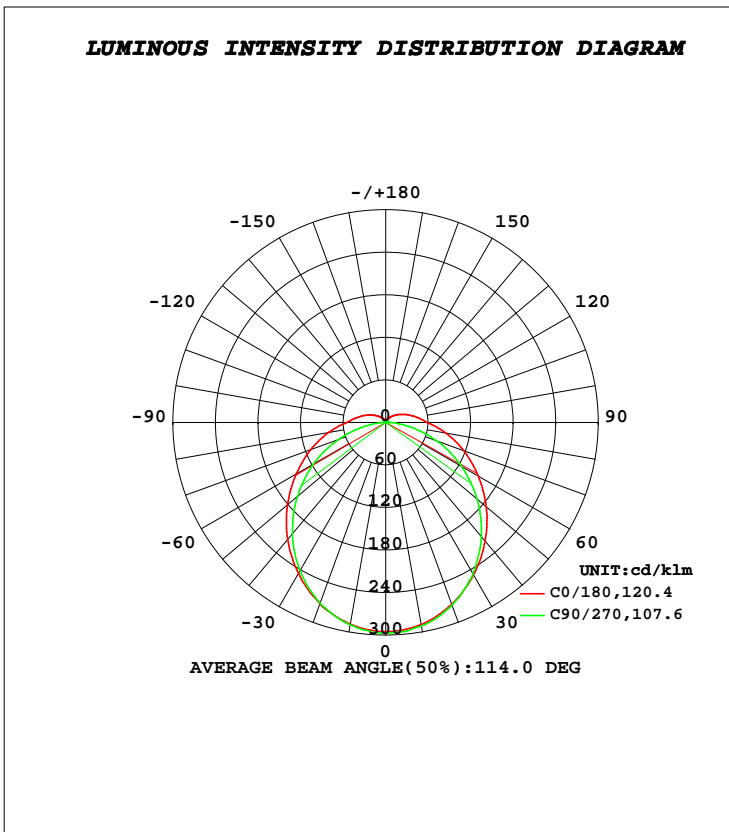


LUMINAIRE PHOTOMETRIC TEST REPORT

Test:U:225.89V I:0.1828A P:40.064W PF:0.9701 Freq:49.97Hz Lamp Flux:5851.8x1 lm		
NAME: LED Linear Lighting System	TYPE:	WEIGHT:4kg
SPEC.:	DIM.: 1416*70*85mm	SERIAL No.:
MFR.:	SUR.:1416*70mm	Shielding Angle:

DATA OF LAMP		PHOTOMETRIC DATA Eff: 146.06 lm/W			
MODEL	CSLS-1540-40FF-05WH	I <sub>max</sub> (cd/klm)	298.1	S/MH(C0/180)	1.24
NOMINAL POWER(W)	40	LOR(%)	100.0	S/MH(C90/270)	1.22
RATED VOLTAGE(V)	230.0	TOTAL FLUX(lm/klm)	1000.0	η UP, DN(C0-180)	4.6,46.2
NOMINAL FLUX(lm)	5851.8	CIE CLASS	DIRECT	η UP, DN(C180-360)	4.3,45.0
LAMPS INSIDE	1	η up(%)	8.9	CIBSE SHR NOM	1.25
TEST VOLTAGE(V)	230.0	η down(%)	91.1	CIBSE SHR MAX	1.35



C Range: 0 - 360DEG  
 C Interval: 22.5DEG  
 Test Speed: HIGH  
 Temperature:25.3DEG  
 Operators:Kaye  
 Test Date:2017-02-13

γ Range: 0 - 180DEG  
 γ Interval: 1.0DEG  
 Test System:EVERFINE GO-2000B\_V1 SYSTEM V2.0.366  
 Humidity:65.0%  
 Test Distance:7.100m [K=1.0000]  
 Remarks:

**ZONAL FLUX DIAGRAM**

**ZONAL FLUX DIAGRAM:**

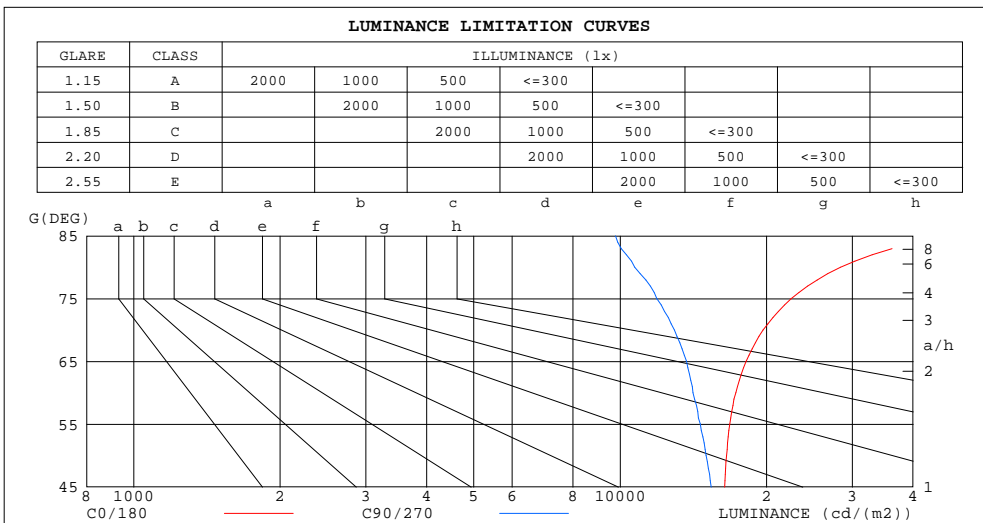
$\gamma$	C0	C45	C90	C135	C180	C225	C270	C315	$\gamma$	$\Phi$ zone	$\Phi$ total	%lum,lamp
10	289.2	290.4	291.7	288.2	288.6	291.6	289.8	285.3	0- 10	27.87	27.87	2.79,2.79
20	272.8	274.7	274.3	273.7	271.8	273.8	271.0	268.8	10- 20	79.53	107.4	10.7,10.7
30	248.1	250.2	246.3	246.8	245.9	246.3	241.6	244.6	20- 30	119.8	227.2	22.7,22.7
40	218.3	217.5	210.0	213.7	215.2	211.9	205.0	212.0	30- 40	143.9	371.1	37.1,37.1
50	185.4	180.4	168.4	176.3	181.1	174.1	162.5	174.4	40- 50	150.2	521.3	52.1,52.1
60	150.6	141.3	123.0	137.2	145.9	134.8	118.0	135.8	50- 60	139.4	660.7	66.1,66.1
70	117.3	103.1	77.08	99.41	112.6	96.80	70.83	98.60	60- 70	115.6	776.3	77.6,77.6
80	85.88	68.56	32.44	65.63	81.73	62.82	27.68	64.73	70- 80	83.83	860.1	86,86
90	58.44	40.10	4.096	37.89	54.67	36.14	2.802	38.00	80- 90	51.36	911.5	91.1,91.1
100	44.29	28.42	3.288	26.76	41.23	25.55	2.668	27.03	90-100	32.20	943.7	94.4,94.4
110	32.63	20.00	3.236	18.72	30.31	17.80	2.553	18.52	100-110	22.48	966.2	96.6,96.6
120	23.07	12.64	2.953	12.96	21.31	12.22	2.419	11.13	110-120	14.96	981.1	98.1,98.1
130	15.65	7.822	2.651	8.795	14.25	8.199	2.134	6.924	120-130	9.246	990.4	99,99
140	10.07	5.006	2.288	5.755	8.910	5.244	1.882	4.298	130-140	5.311	995.7	99.6,99.6
150	6.053	2.858	1.900	3.480	5.077	2.958	1.574	2.288	140-150	2.651	998.3	99.8,99.8
160	3.167	1.765	1.486	1.737	2.323	1.342	1.151	1.471	150-160	1.146	999.5	99.9,99.9
170	1.506	1.186	1.195	1.216	1.017	1.016	1.034	1.041	160-170	0.3999	999.9	100,100
180	1.148	1.112	1.146	1.151	1.151	1.114	1.146	1.151	170-180	0.1079	1000	100,100
DEG	LUMINOUS INTENSITY:cd/klm									UNIT: lm/klm		

**C Range: 0 - 360DEG**  
**C Interval: 22.5DEG**  
**Test Speed: HIGH**  
**Temperature:25.3DEG**  
**Operators:Kaye**  
**Test Date:2017-02-13**

**$\gamma$  Range: 0 - 180DEG**  
 **$\gamma$  Interval: 1.0DEG**  
**Test System:EVERFINE GO-2000B\_V1 SYSTEM V2.0.366**  
**Humidity:65.0%**  
**Test Distance:7.100m [K=1.0000]**  
**Remarks:**

LUMINANCE LIMITATION CURVES

Test:U:225.89V I:0.1828A P:40.064W PF:0.9701 Freq:49.97Hz Lamp Flux:5851.8x1 lm		
NAME: LED Linear Lighting System	TYPE:	WEIGHT:4kg
SPEC.:	DIM.: 1416*70*85mm	SERIAL No.:
MFR.:	SUR.:1416*70mm	Shielding Angle:



LUMINANCE cd/(m2)		
G(DEG)	C0/180	C90/270
85	46871	9780
80	28374	10717
75	22470	11898
70	19673	12929
65	18163	13684
60	17283	14117
55	16790	14615
50	16545	15030
45	16398	15382

C Range: 0 - 360DEG  
 C Interval: 22.5DEG  
 Test Speed: HIGH  
 Temperature: 25.3DEG  
 Operators: Kaye  
 Test Date: 2017-02-13

γ Range: 0 - 180DEG  
 γ Interval: 1.0DEG  
 Test System: EVERFINE GO-2000B\_V1 SYSTEM V2.0.366  
 Humidity: 65.0%  
 Test Distance: 7.100m [K=1.0000]  
 Remarks:

WEC AND CCEC

Test:U:225.89V I:0.1828A P:40.064W PF:0.9701 Freq:49.97Hz Lamp Flux:5851.8x1 lm		
NAME: LED Linear Lighting System	TYPE:	WEIGHT:4kg
SPEC.:	DIM.: 1416*70*85mm	SERIAL No.:
MFR.:	SUR.:1416*70mm	Shielding Angle:

$\rho_{cc}$	80%			70%			50%			30%			10%			0
$\rho_w$	50%	30%	10%	50%	30%	10%	50%	30%	10%	50%	30%	10%	50%	30%	10%	0
$\rho_{fc}$	20%			20%			20%			20%			20%			0
<b>RCR</b>	<b>RCR:Room Cavity Ratio</b>						<b>Wall Exitance Coefficients(WEC)</b>									
0.0																
1.0	.351	.200	.063	.341	.195	.062	.323	.185	.059	.306	.177	.057	.290	.168	.054	
2.0	.314	.172	.053	.305	.168	.052	.289	.160	.050	.273	.153	.048	.259	.147	.046	
3.0	.283	.151	.045	.276	.148	.044	.261	.141	.043	.247	.135	.042	.234	.130	.040	
4.0	.258	.134	.039	.251	.131	.039	.237	.126	.038	.225	.121	.036	.214	.116	.035	
5.0	.236	.120	.035	.230	.118	.034	.218	.113	.033	.207	.109	.032	.196	.105	.031	
6.0	.217	.109	.031	.212	.107	.031	.201	.103	.030	.191	.099	.029	.181	.095	.028	
7.0	.201	.100	.028	.196	.098	.028	.186	.094	.027	.177	.091	.026	.168	.088	.026	
8.0	.187	.092	.026	.183	.090	.025	.174	.087	.025	.165	.084	.024	.157	.081	.024	
9.0	.175	.085	.024	.171	.083	.023	.163	.080	.023	.155	.078	.022	.148	.075	.022	
10.0	.164	.079	.022	.160	.077	.022	.153	.075	.021	.146	.072	.021	.139	.070	.020	

$\rho_{cc}$	80%			70%			50%			30%			10%			0
$\rho_w$	50%	30%	10%	50%	30%	10%	50%	30%	10%	50%	30%	10%	50%	30%	10%	0
$\rho_{fc}$	20%			20%			20%			20%			20%			0
<b>RCR</b>	<b>RCR:Room Cavity Ratio</b>						<b>Ceiling Cavity Exitance Coefficients(CCEC)</b>									
0.0	.258	.258	.258	.220	.220	.220	.150	.150	.150	.086	.086	.086	.028	.028	.028	
1.0	.251	.224	.199	.215	.192	.171	.147	.132	.118	.085	.076	.069	.027	.025	.022	
2.0	.244	.200	.164	.209	.172	.142	.143	.119	.099	.082	.069	.058	.026	.022	.019	
3.0	.236	.183	.141	.202	.158	.122	.139	.110	.086	.080	.064	.051	.026	.021	.017	
4.0	.228	.170	.126	.196	.147	.110	.135	.103	.077	.078	.060	.046	.025	.020	.015	
5.0	.220	.160	.116	.189	.139	.101	.130	.097	.071	.076	.057	.042	.024	.019	.014	
6.0	.213	.152	.108	.183	.132	.094	.126	.092	.067	.073	.054	.040	.024	.018	.013	
7.0	.206	.145	.103	.177	.126	.089	.123	.088	.063	.071	.052	.038	.023	.017	.012	
8.0	.200	.140	.098	.172	.121	.086	.119	.085	.061	.069	.050	.036	.022	.016	.012	
9.0	.193	.135	.095	.167	.117	.083	.115	.082	.059	.067	.049	.035	.022	.016	.012	
10.0	.188	.130	.092	.162	.113	.081	.112	.080	.057	.065	.047	.034	.021	.015	.011	

C Range: 0 - 360DEG  
 C Interval: 22.5DEG  
 Test Speed: HIGH  
 Temperature:25.3DEG  
 Operators:Kaye  
 Test Date:2017-02-13

$\gamma$  Range: 0 - 180DEG  
 $\gamma$  Interval: 1.0DEG  
 Test System:EVERFINE GO-2000B\_V1 SYSTEM V2.0.366  
 Humidity:65.0%  
 Test Distance:7.100m [K=1.0000]  
 Remarks:

**UGR(Unified Glare Rating) Table**

Test:U:225.89V I:0.1828A P:40.064W PF:0.9701 Freq:49.97Hz Lamp Flux:5851.8x1 lm										
NAME: LED Linear Lighting System					TYPE:			WEIGHT:4kg		
SPEC.:					DIM.: 1416*70*85mm			SERIAL No.:		
MFR.:					SUR.:1416*70mm			Shielding Angle:		
<b>ceiling/cavity</b>	<b>0.7</b>	<b>0.7</b>	<b>0.5</b>	<b>0.5</b>	<b>0.3</b>	<b>0.7</b>	<b>0.7</b>	<b>0.5</b>	<b>0.5</b>	<b>0.3</b>
<b>walls</b>	<b>0.5</b>	<b>0.3</b>	<b>0.5</b>	<b>0.3</b>	<b>0.3</b>	<b>0.5</b>	<b>0.3</b>	<b>0.5</b>	<b>0.3</b>	<b>0.3</b>
<b>working plane</b>	<b>0.2</b>	<b>0.2</b>	<b>0.2</b>	<b>0.2</b>	<b>0.2</b>	<b>0.2</b>	<b>0.2</b>	<b>0.2</b>	<b>0.2</b>	<b>0.2</b>
<b>Room dimensions</b>	<b>Viewed crosswise</b>					<b>Viewed endwise</b>				
<b>x = 2H y = 2H</b>	<b>16.2</b>	<b>17.6</b>	<b>16.6</b>	<b>18.0</b>	<b>18.4</b>	<b>15.4</b>	<b>16.9</b>	<b>15.8</b>	<b>17.2</b>	<b>17.6</b>
<b>3H</b>	<b>18.3</b>	<b>19.7</b>	<b>18.8</b>	<b>20.1</b>	<b>20.5</b>	<b>17.0</b>	<b>18.3</b>	<b>17.4</b>	<b>18.7</b>	<b>19.1</b>
<b>4H</b>	<b>19.5</b>	<b>20.7</b>	<b>19.9</b>	<b>21.1</b>	<b>21.6</b>	<b>17.6</b>	<b>18.9</b>	<b>18.0</b>	<b>19.3</b>	<b>19.7</b>
<b>6H</b>	<b>20.7</b>	<b>21.9</b>	<b>21.1</b>	<b>22.3</b>	<b>22.8</b>	<b>18.1</b>	<b>19.3</b>	<b>18.5</b>	<b>19.7</b>	<b>20.1</b>
<b>8H</b>	<b>21.3</b>	<b>22.5</b>	<b>21.8</b>	<b>22.9</b>	<b>23.4</b>	<b>18.2</b>	<b>19.4</b>	<b>18.7</b>	<b>19.8</b>	<b>20.3</b>
<b>12H</b>	<b>22.1</b>	<b>23.2</b>	<b>22.5</b>	<b>23.6</b>	<b>24.1</b>	<b>18.3</b>	<b>19.4</b>	<b>18.8</b>	<b>19.9</b>	<b>20.4</b>
<b>4H 2H</b>	<b>16.8</b>	<b>18.1</b>	<b>17.2</b>	<b>18.5</b>	<b>18.9</b>	<b>16.2</b>	<b>17.5</b>	<b>16.7</b>	<b>17.9</b>	<b>18.3</b>
<b>3H</b>	<b>19.2</b>	<b>20.3</b>	<b>19.7</b>	<b>20.7</b>	<b>21.2</b>	<b>18.0</b>	<b>19.1</b>	<b>18.5</b>	<b>19.6</b>	<b>20.1</b>
<b>4H</b>	<b>20.5</b>	<b>21.5</b>	<b>21.0</b>	<b>22.0</b>	<b>22.5</b>	<b>18.8</b>	<b>19.8</b>	<b>19.3</b>	<b>20.3</b>	<b>20.8</b>
<b>6H</b>	<b>21.9</b>	<b>22.8</b>	<b>22.4</b>	<b>23.3</b>	<b>23.9</b>	<b>19.4</b>	<b>20.3</b>	<b>20.0</b>	<b>20.9</b>	<b>21.4</b>
<b>8H</b>	<b>22.7</b>	<b>23.5</b>	<b>23.2</b>	<b>24.0</b>	<b>24.6</b>	<b>19.7</b>	<b>20.5</b>	<b>20.2</b>	<b>21.0</b>	<b>21.6</b>
<b>12H</b>	<b>23.5</b>	<b>24.3</b>	<b>24.1</b>	<b>24.9</b>	<b>25.5</b>	<b>19.8</b>	<b>20.6</b>	<b>20.4</b>	<b>21.2</b>	<b>21.8</b>
<b>8H 4H</b>	<b>20.8</b>	<b>21.7</b>	<b>21.4</b>	<b>22.2</b>	<b>22.8</b>	<b>19.4</b>	<b>20.3</b>	<b>20.0</b>	<b>20.8</b>	<b>21.4</b>
<b>6H</b>	<b>22.5</b>	<b>23.2</b>	<b>23.1</b>	<b>23.8</b>	<b>24.4</b>	<b>20.3</b>	<b>21.1</b>	<b>20.9</b>	<b>21.6</b>	<b>22.2</b>
<b>8H</b>	<b>23.5</b>	<b>24.1</b>	<b>24.1</b>	<b>24.7</b>	<b>25.4</b>	<b>20.7</b>	<b>21.4</b>	<b>21.3</b>	<b>22.0</b>	<b>22.6</b>
<b>12H</b>	<b>24.6</b>	<b>25.2</b>	<b>25.2</b>	<b>25.8</b>	<b>26.4</b>	<b>21.1</b>	<b>21.6</b>	<b>21.7</b>	<b>22.2</b>	<b>22.9</b>
<b>12H 4H</b>	<b>20.9</b>	<b>21.7</b>	<b>21.4</b>	<b>22.2</b>	<b>22.8</b>	<b>19.6</b>	<b>20.4</b>	<b>20.1</b>	<b>20.9</b>	<b>21.5</b>
<b>6H</b>	<b>22.6</b>	<b>23.3</b>	<b>23.2</b>	<b>23.9</b>	<b>24.5</b>	<b>20.7</b>	<b>21.3</b>	<b>21.2</b>	<b>21.9</b>	<b>22.5</b>
<b>8H</b>	<b>23.7</b>	<b>24.3</b>	<b>24.3</b>	<b>24.9</b>	<b>25.5</b>	<b>21.2</b>	<b>21.7</b>	<b>21.8</b>	<b>22.3</b>	<b>23.0</b>
<b>Variations with the observer position at spacings:</b>										
<b>S = 1.0H</b>	<b>+ 0.1 / - 0.1</b>					<b>+ 0.1 / - 0.2</b>				
<b>1.5H</b>	<b>+ 0.2 / - 0.3</b>					<b>+ 0.2 / - 0.3</b>				
<b>2.0H</b>	<b>+ 0.2 / - 0.3</b>					<b>+ 0.2 / - 0.4</b>				

CIE Pub.117, 5852 lm Total Lamp Luminous Flux Correct ( $8\log(F/F0) = 6.1$ )

**C Range: 0 - 360DEG**  
**C Interval: 22.5DEG**  
**Test Speed: HIGH**  
**Temperature:25.3DEG**  
**Operators:Kaye**  
**Test Date:2017-02-13**

**γ Range: 0 - 180DEG**  
**γ Interval: 1.0DEG**  
**Test System:EVERFINE GO-2000B\_V1 SYSTEM V2.0.366**  
**Humidity:65.0%**  
**Test Distance:7.100m [K=1.0000]**  
**Remarks:**

**UTILIZATION FACTORS TABLE**

Test:U:225.89V I:0.1828A P:40.064W PF:0.9701 Freq:49.97Hz Lamp Flux:5851.8x1 lm		
NAME: LED Linear Lighting System	TYPE:	WEIGHT:4kg
SPEC.:	DIM.: 1416*70*85mm	SERIAL No.:
MFR.:	SUR.:1416*70mm	Shielding Angle:

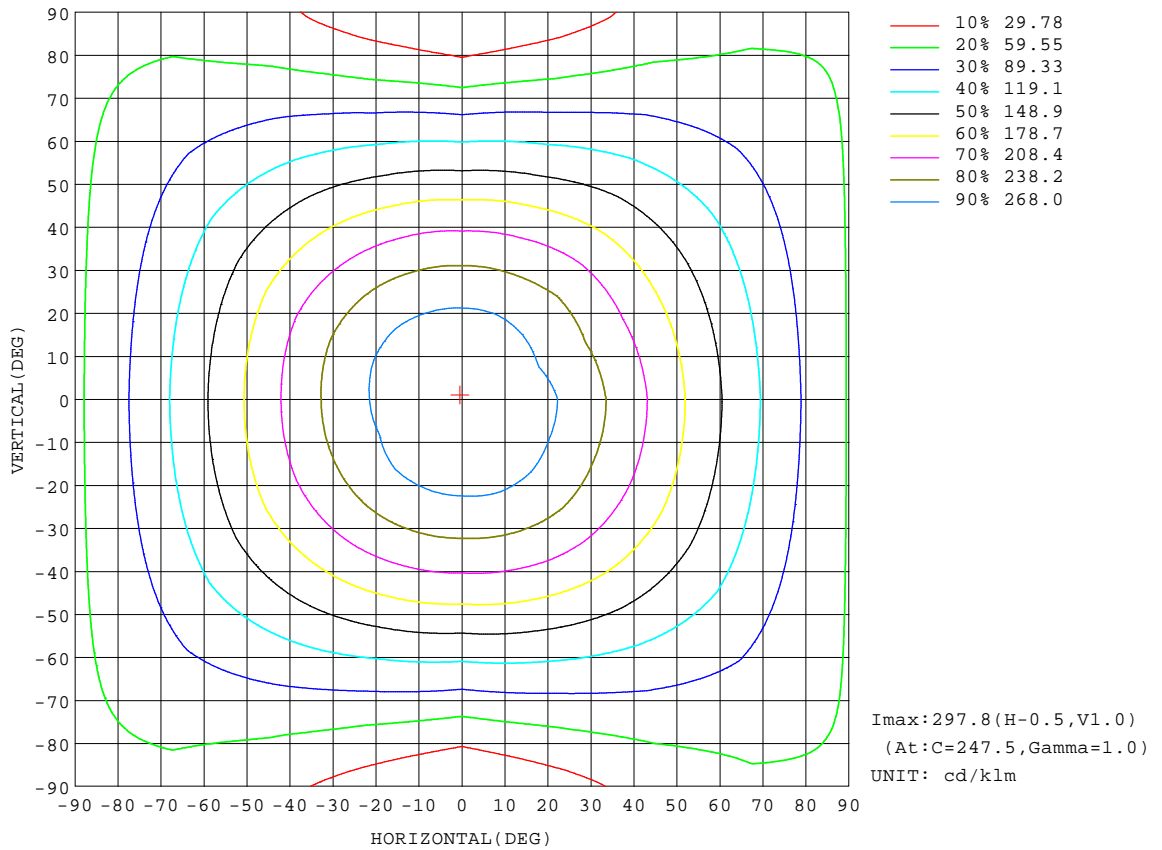
REFLECTANCE										
Ceiling	0.8	0.8	0.8	0.7	0.7	0.7	0.5	0.5	0.5	0
Walls	0.7	0.5	0.3	0.7	0.5	0.3	0.7	0.5	0.3	0
Working plane	0.2	0.2	0.2	0.2	0.2	0.2	0.2	0.2	0.2	0
ROOM INDEX	UTILIZATION FACTORS(PERCENT) $k(RI) \times RCR = 5$									
$k = 0.60$	53	41	34	52	41	34	51	40	33	27
0.80	62	50	42	61	50	42	59	49	42	34
1.00	70	58	51	69	58	50	66	59	49	41
1.25	77	66	58	75	65	57	72	63	56	48
1.50	82	71	63	80	70	63	76	68	61	52
2.00	89	79	72	87	78	71	82	75	69	59
2.50	94	84	77	91	83	76	86	79	74	63
3.00	97	89	82	94	87	81	89	83	78	67
4.00	101	95	89	98	92	87	93	88	83	72
5.00	104	98	93	101	96	91	95	91	87	75
ROOM INDEX	UF(total)									Direct
According to DIN EN 13032-2 2004			Suspended				SHRNOM = 1.25			

C Range: 0 - 360DEG  
 C Interval: 22.5DEG  
 Test Speed: HIGH  
 Temperature:25.3DEG  
 Operators:Kaye  
 Test Date:2017-02-13

$\gamma$  Range: 0 - 180DEG  
 $\gamma$  Interval: 1.0DEG  
 Test System:EVERFINE GO-2000B\_V1 SYSTEM V2.0.366  
 Humidity:65.0%  
 Test Distance:7.100m [K=1.0000]  
 Remarks:

**ISOCANDELA DIAGRAM**

Test:U:225.89V I:0.1828A P:40.064W PF:0.9701 Freq:49.97Hz Lamp Flux:5851.8x1 lm		
NAME: LED Linear Lighting System	TYPE:	WEIGHT:4kg
SPEC.:	DIM.: 1416*70*85mm	SERIAL No.:
MFR.:	SUR.:1416*70mm	Shielding Angle:



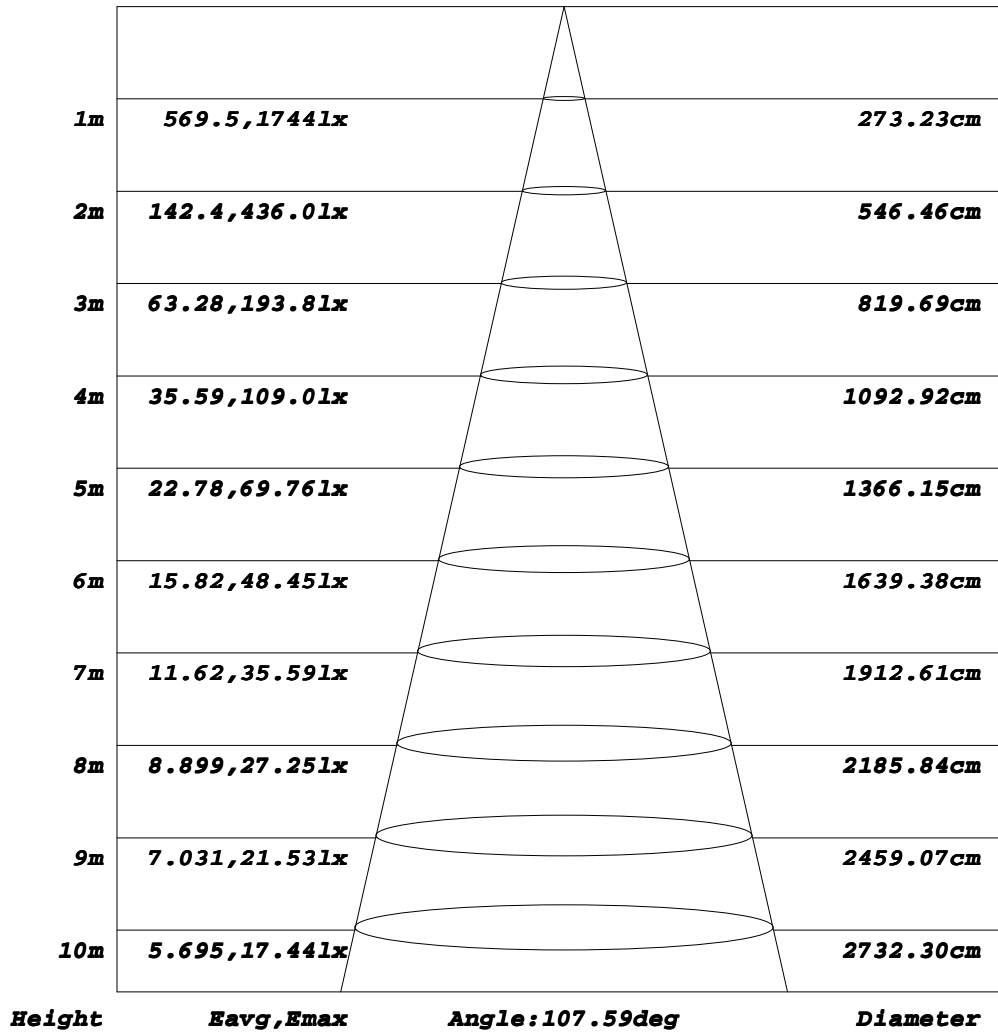
**C Range: 0 - 360DEG**  
**C Interval: 22.5DEG**  
**Test Speed: HIGH**  
**Temperature:25.3DEG**  
**Operators:Kaye**  
**Test Date:2017-02-13**

**γ Range: 0 - 180DEG**  
**γ Interval: 1.0DEG**  
**Test System:EVERFINE GO-2000B\_V1 SYSTEM V2.0.366**  
**Humidity:65.0%**  
**Test Distance:7.100m [K=1.0000]**  
**Remarks:**

**AAI Figure**

Test:U:225.89V I:0.1828A P:40.064W PF:0.9701 Freq:49.97Hz Lamp Flux:5851.8x1 lm		
NAME: LED Linear Lighting System	TYPE:	WEIGHT:4kg
SPEC.:	DIM.: 1416*70*85mm	SERIAL No.:
MFR.:	SUR.:1416*70mm	Shielding Angle:

**Flux out:3389 lm**



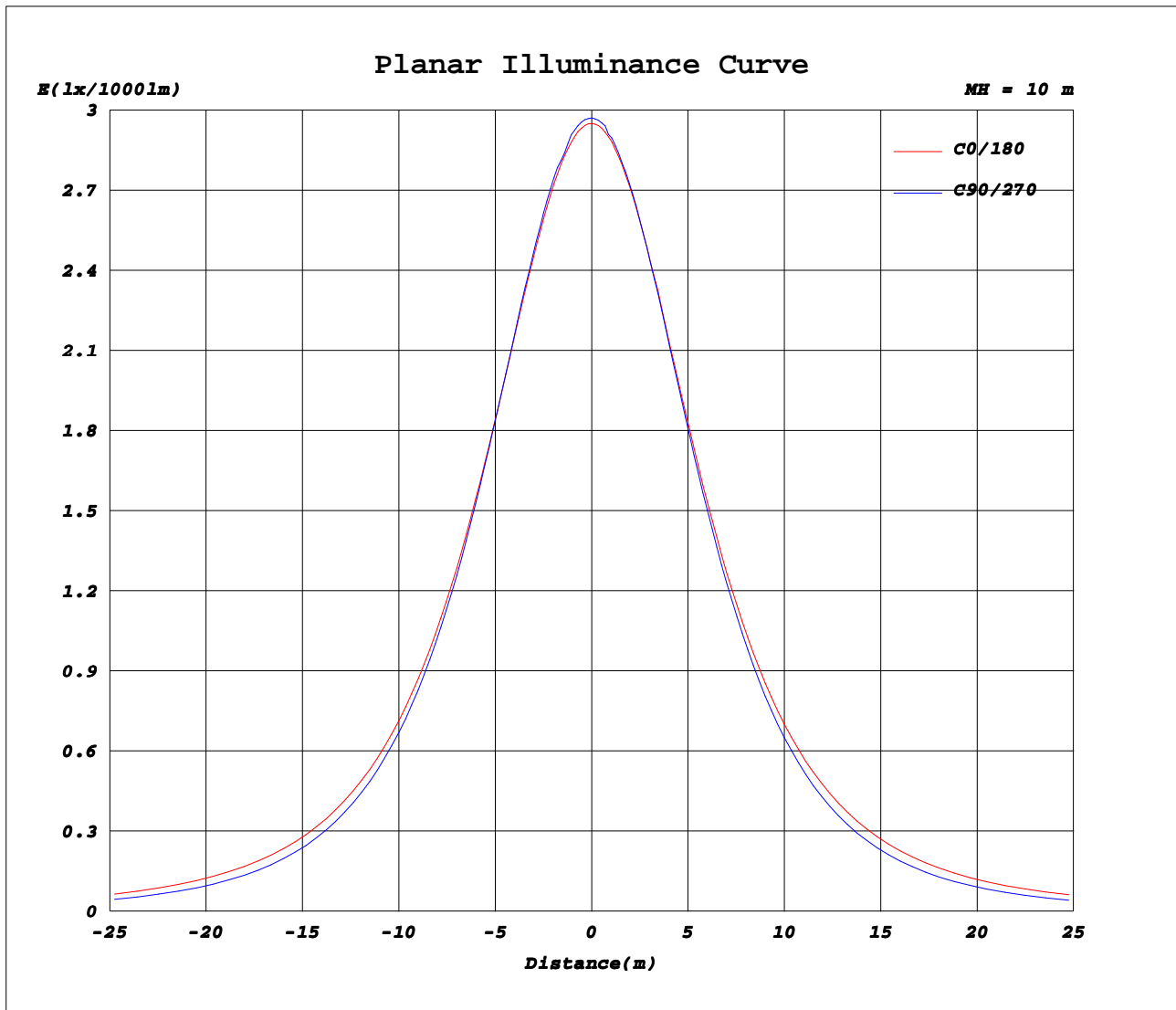
Note: The Curves indicate the illuminated area and the average illumination when the luminaire is at different distance.

**C Range: 0 - 360DEG**  
**C Interval: 22.5DEG**  
**Test Speed: HIGH**  
**Temperature: 25.3DEG**  
**Operators: Kaye**  
**Test Date: 2017-02-13**

**γ Range: 0 - 180DEG**  
**γ Interval: 1.0DEG**  
**Test System: EVERFINE GO-2000B\_V1 SYSTEM V2.0.366**  
**Humidity: 65.0%**  
**Test Distance: 7.100m [K=1.0000]**  
**Remarks:**



Planar Illuminance Curve



C Range: 0 - 360DEG  
 C Interval: 22.5DEG  
 Test Speed: HIGH  
 Temperature: 25.3DEG  
 Operators: Kaye  
 Test Date: 2017-02-13

γ Range: 0 - 180DEG  
 γ Interval: 1.0DEG  
 Test System: EVERFINE GO-2000B\_V1 SYSTEM V2.0.366  
 Humidity: 65.0%  
 Test Distance: 7.100m [K=1.0000]  
 Remarks:

LUMINOUS DISTRIBUTION INTENSITY DATA

Test:U:225.89V I:0.1828A P:40.064W PF:0.9701 Freq:49.97Hz Lamp Flux:5851.8x1 lm		
NAME: LED Linear Lighting System	TYPE:	WEIGHT:4kg
SPEC.:	DIM.: 1416*70*85mm	SERIAL No.:
MFR.:	SUR.:1416*70mm	Shielding Angle:

Table--1

UNIT: cd/klm

C (DEG) \ γ (DEG)	0	22.5	45	67.5	90	112.5	135	157.5	180	202.5	225	247.5	270	292.5	315	337.5			
0	295	295	296	298	297	296	292	290	295	295	296	298	297	296	292	290			
5	294	294	295	296	296	295	291	289	293	294	295	296	294	293	290	288			
10	289	289	290	292	292	291	288	285	289	289	292	291	290	289	285	283			
15	282	282	284	285	284	284	282	279	282	282	284	283	282	281	278	276			
20	273	273	275	276	274	274	274	269	272	273	274	272	271	271	269	266			
25	261	261	264	263	261	261	261	259	260	261	261	259	258	258	258	255			
30	248	248	250	249	246	246	247	246	246	248	246	243	242	242	245	242			
35	234	234	235	232	229	230	231	231	231	233	230	226	224	225	229	228			
40	218	218	218	214	210	211	214	216	215	216	212	207	205	207	212	212			
45	202	202	200	194	190	192	195	199	198	199	193	188	184	188	194	196			
50	185	185	180	174	168	171	176	182	181	181	174	167	163	166	174	179			
55	168	168	161	153	146	150	157	164	163	162	154	145	140	145	155	162			
60	151	149	141	131	123	129	137	145	146	144	135	124	118	124	136	144			
65	134	132	122	109	101	108	118	128	129	126	115	103	94.7	103	117	127			
70	117	115	103	88.9	77.1	86.9	99.4	111	113	109	96.8	81.5	70.8	81.8	98.6	111			
75	101	98.6	85.4	68.2	53.7	66.5	82.1	94.7	96.9	92.6	79.3	61.4	48.4	62.0	81.1	94.5			
80	85.9	82.7	68.6	49.5	32.4	48.1	65.6	79.1	81.7	77.0	62.8	43.4	27.7	43.8	64.7	79.0			
85	71.2	67.8	53.2	33.1	14.9	32.0	50.6	64.4	67.2	62.4	47.8	27.6	10.8	28.2	49.7	64.4			
90	58.4	54.4	40.1	20.1	4.10	19.3	37.9	51.5	54.7	50.2	36.1	17.0	2.80	17.6	38.0	52.2			
95	51.1	47.2	33.7	15.2	3.33	14.6	31.9	44.6	47.7	43.5	30.5	13.0	2.74	13.6	32.1	45.2			
100	44.3	40.6	28.4	12.1	3.29	11.5	26.8	38.5	41.2	37.4	25.6	10.2	2.67	10.8	27.0	38.8			
105	38.1	34.8	23.9	9.79	3.25	9.39	22.4	33.0	35.5	32.0	21.3	8.27	2.60	8.30	22.6	33.1			
110	32.6	29.4	20.0	8.01	3.24	7.84	18.7	28.1	30.3	27.0	17.8	6.86	2.55	6.82	18.5	28.0			
115	27.5	24.8	16.7	6.51	3.11	6.60	15.6	23.6	25.5	22.7	14.8	5.85	2.49	5.67	15.1	23.5			
120	23.1	20.6	12.6	5.49	2.95	5.67	13.0	19.7	21.3	18.8	12.2	5.01	2.42	4.74	11.1	18.7			
125	19.1	17.1	9.80	4.68	2.81	4.91	10.7	16.3	17.6	15.4	10.0	4.29	2.29	3.97	8.84	15.5			
130	15.7	13.9	7.82	4.02	2.65	4.23	8.79	13.4	14.2	12.5	8.20	3.64	2.13	3.36	6.92	12.7			
135	12.7	11.2	6.25	3.43	2.47	3.56	7.17	10.8	11.4	9.89	6.61	3.04	2.01	2.83	5.50	9.83			
140	10.1	8.08	5.01	2.92	2.29	2.94	5.76	8.61	8.91	7.73	5.24	2.46	1.88	2.38	4.30	6.78			
145	7.88	5.73	3.95	2.52	2.10	2.41	4.57	6.69	6.85	5.91	4.08	1.99	1.74	2.06	3.01	4.75			
150	6.05	4.20	2.86	2.17	1.90	1.97	3.48	4.93	5.08	4.40	2.96	1.59	1.57	1.77	2.29	3.53			
155	4.52	3.23	2.21	1.84	1.69	1.62	2.50	3.60	3.64	3.13	1.97	1.29	1.42	1.48	1.81	2.71			
160	3.17	2.39	1.76	1.51	1.49	1.44	1.74	2.46	2.32	2.04	1.34	1.01	1.15	1.00	1.47	1.95			
165	2.14	1.73	1.45	1.28	1.31	1.28	1.26	1.62	1.44	1.28	0.99	0.98	0.99	0.99	1.23	1.44			
170	1.51	1.34	1.19	1.18	1.19	1.20	1.22	1.21	1.02	1.00	1.02	1.03	1.03	1.03	1.04	1.15			
175	1.19	1.16	1.14	1.15	1.18	1.19	1.20	1.19	1.09	1.06	1.07	1.07	1.07	1.07	1.07	1.09			
180	1.15	1.12	1.11	1.13	1.15	1.15	1.15	1.15	1.15	1.12	1.11	1.13	1.15	1.15	1.15	1.16			

C Range: 0 - 360DEG  
 C Interval: 22.5DEG  
 Test Speed: HIGH  
 Temperature: 25.3DEG  
 Operators: Kaye  
 Test Date: 2017-02-13

γ Range: 0 - 180DEG  
 γ Interval: 1.0DEG  
 Test System: EVERFINE GO-2000B\_V1 SYSTEM V2.0.366  
 Humidity: 65.0%  
 Test Distance: 7.100m [K=1.0000]  
 Remarks: